

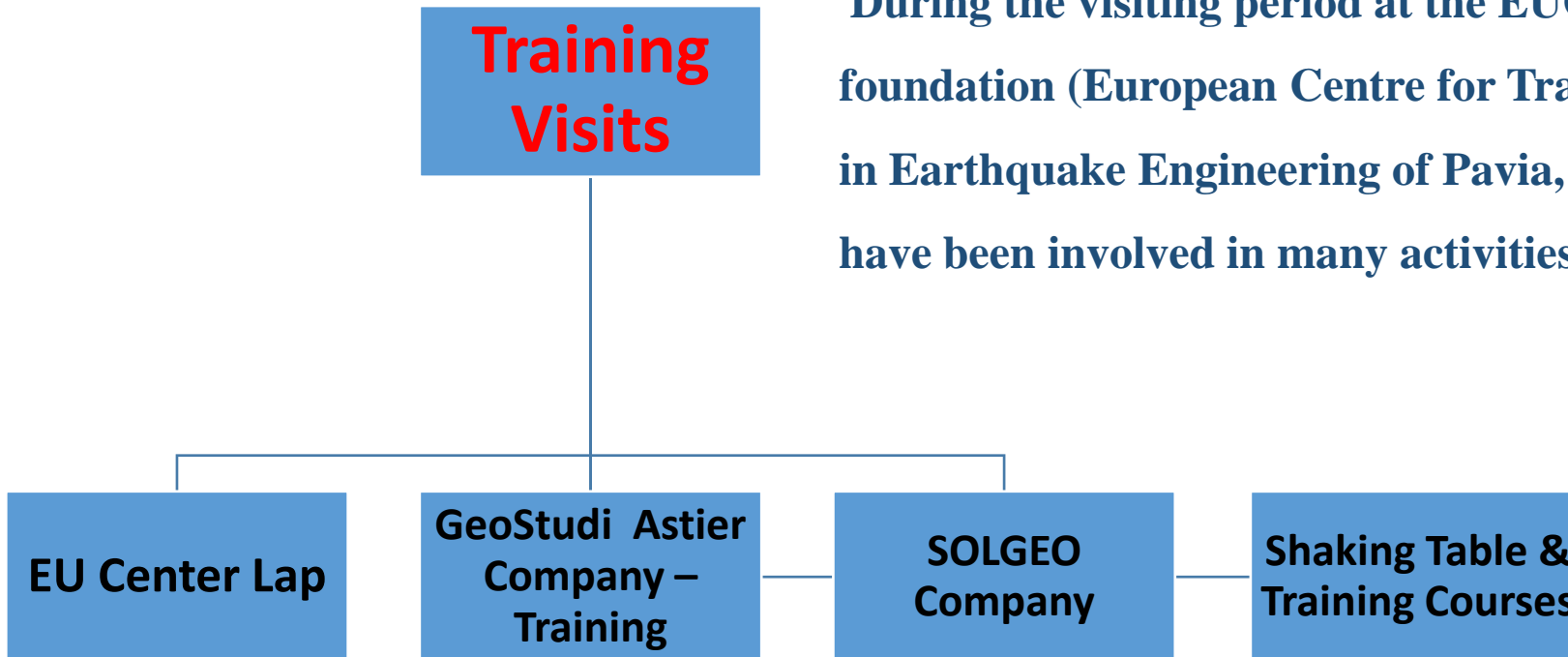
## **An-Najah National University**

**During his visiting period at the EUCENTRE foundation  
(European Centre for Training and Research in Earthquake  
Engineering of Pavia, Italy), and they have been involved in many  
activities.**

## An-Najah National University

### Training Visits

During the visiting period at the EUCENTRE foundation (European Centre for Training and Research in Earthquake Engineering of Pavia, Italy), and they have been involved in many activities.



## Eucentre TREES Lab:

Laboratory for Training and Research in  
Earthquake Engineering and Seismology

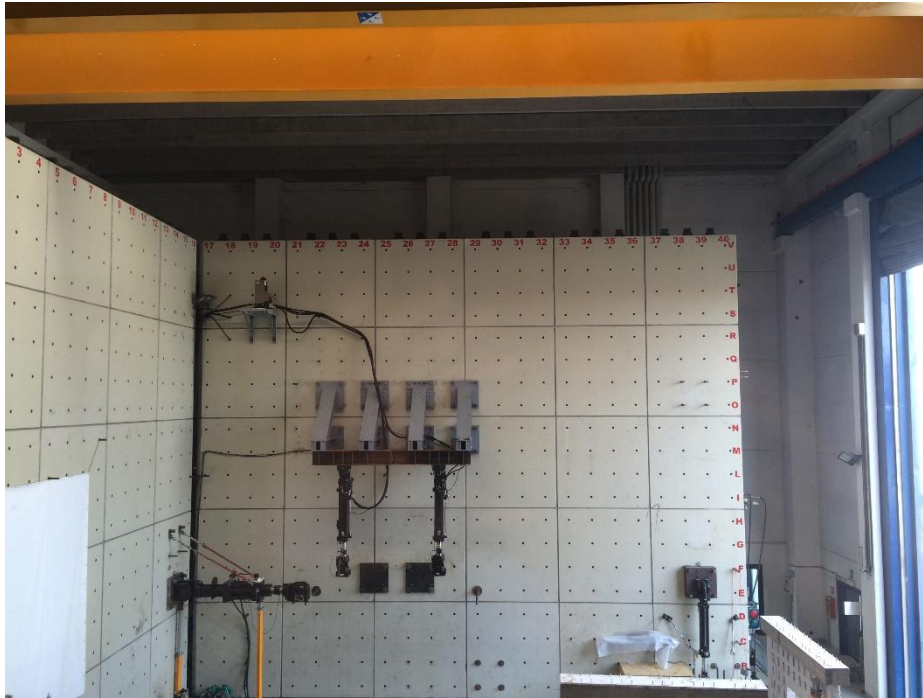
Facility and Research















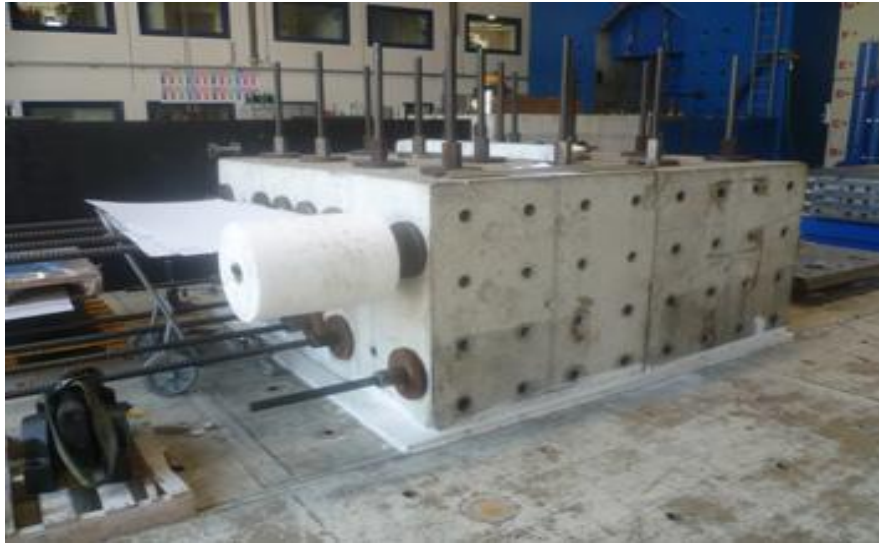




















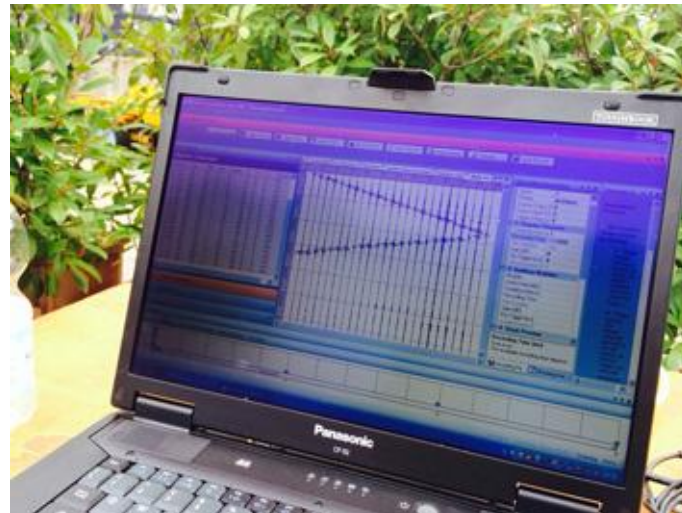


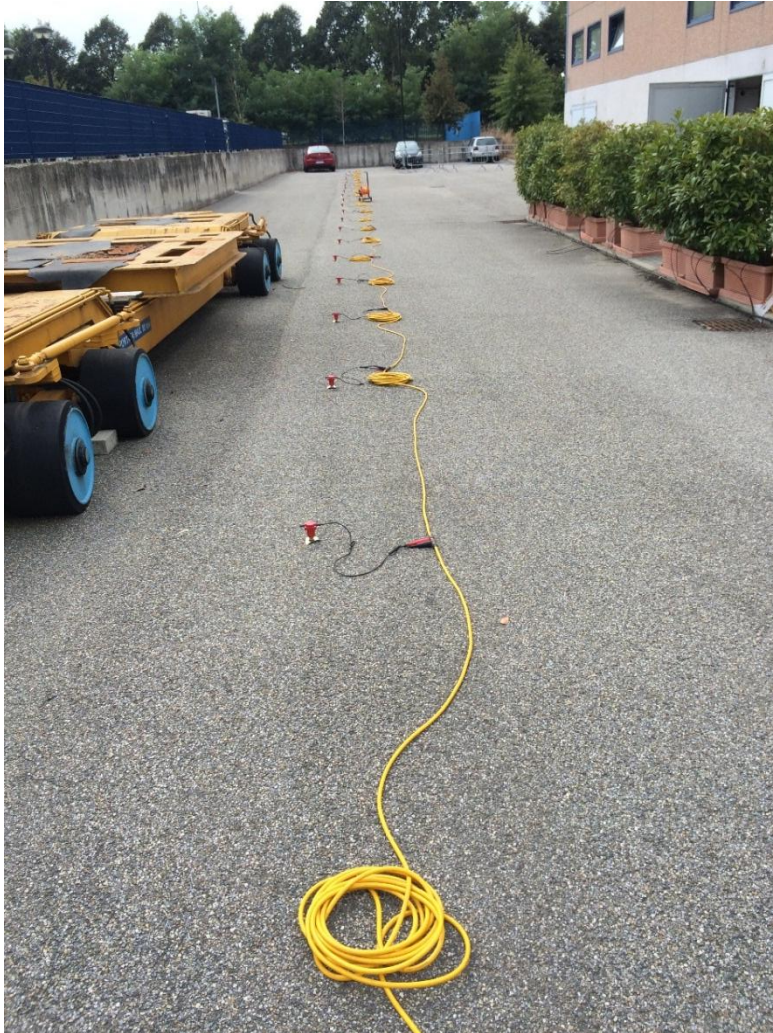




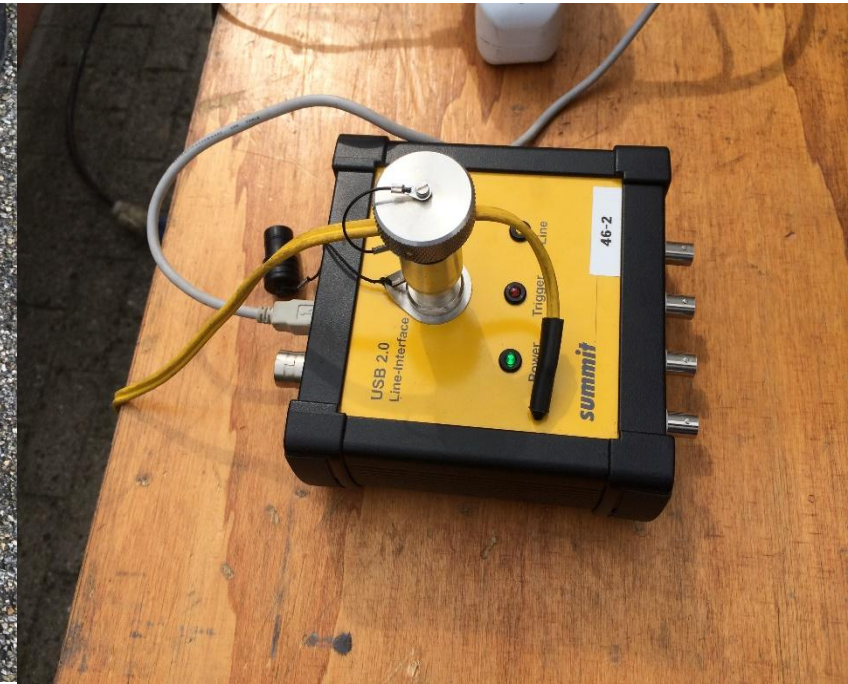


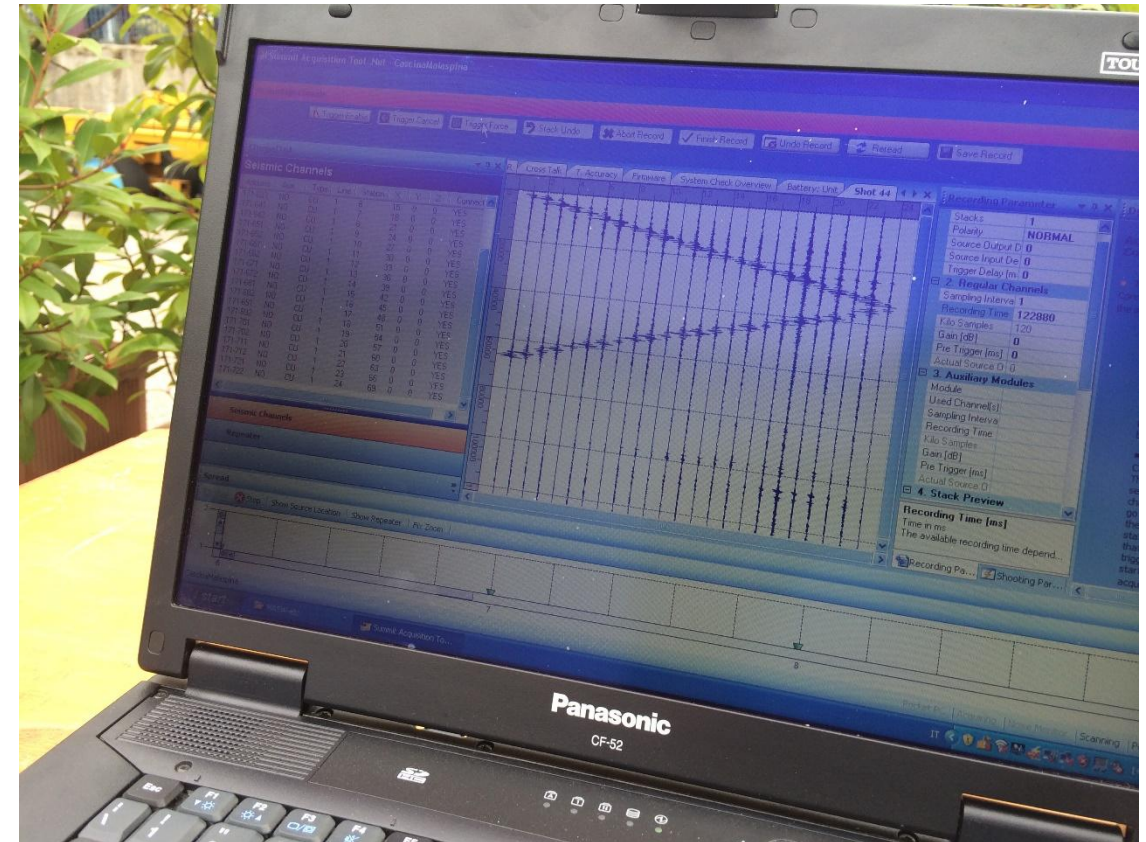












# Geoastier Company – Training



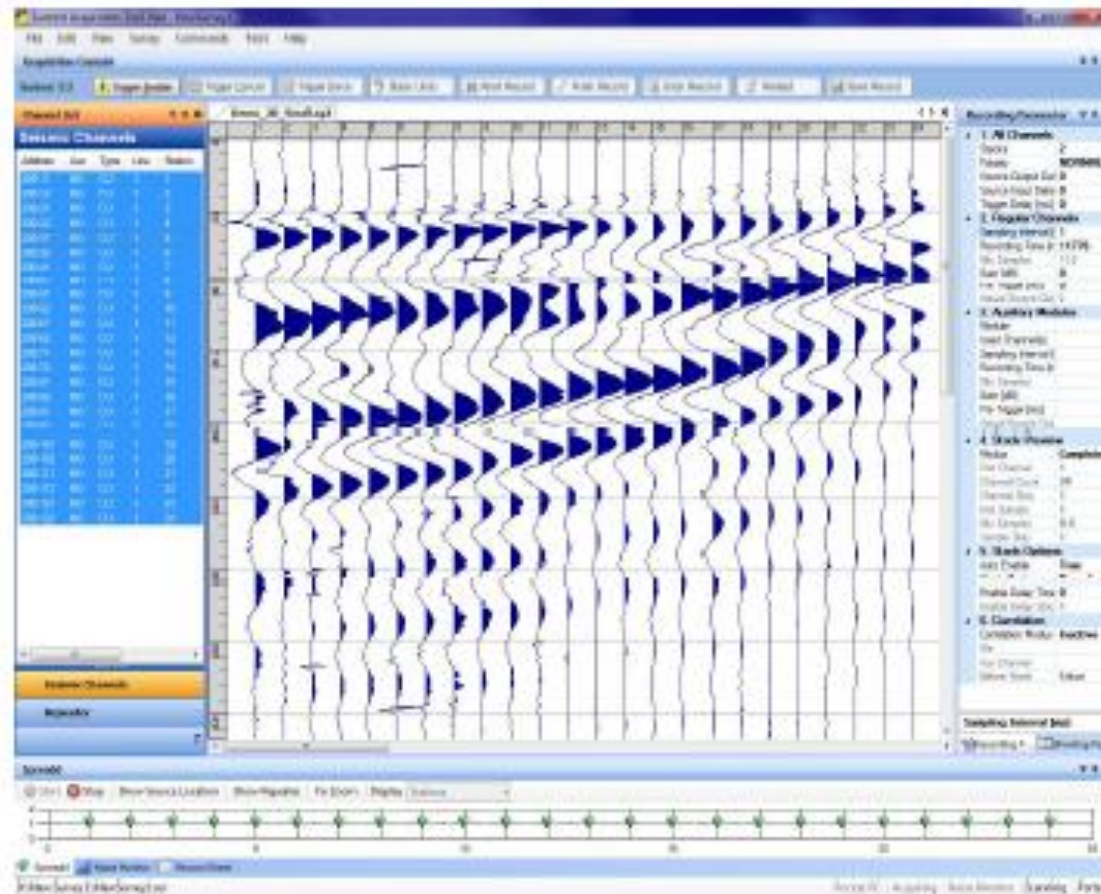
Figure 2 Right side view of the XStream with connector for geophones



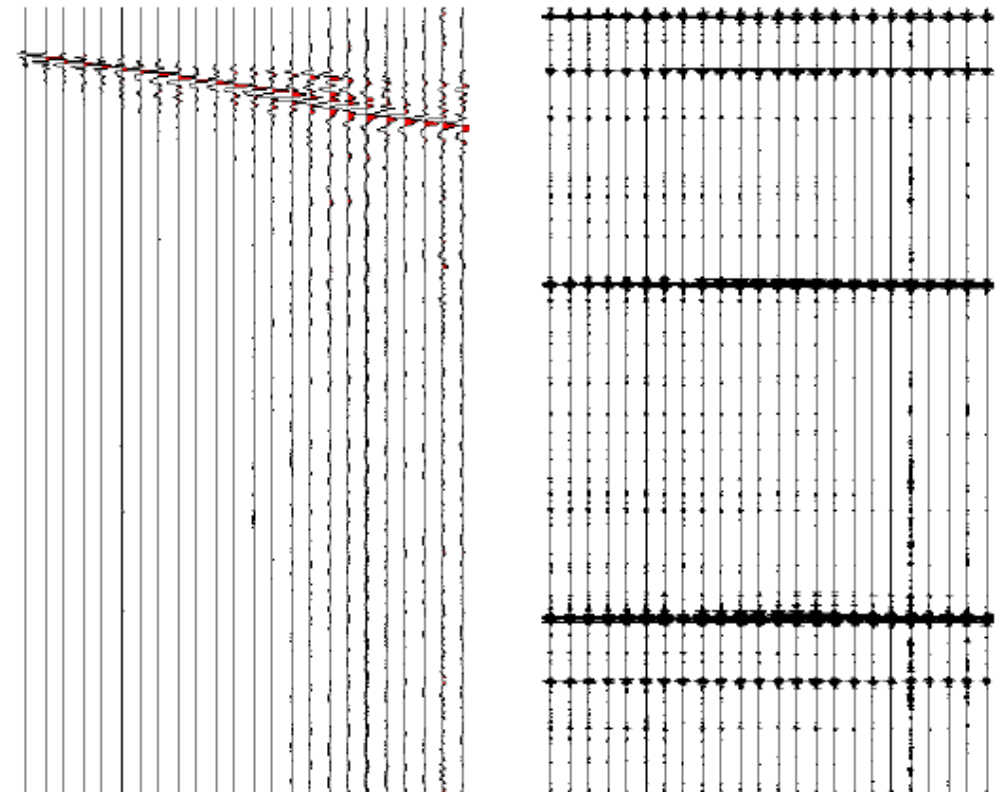
Figure 3 Left side view of the XStream with connectors for batteries, USB and Trigger-In and Outputs

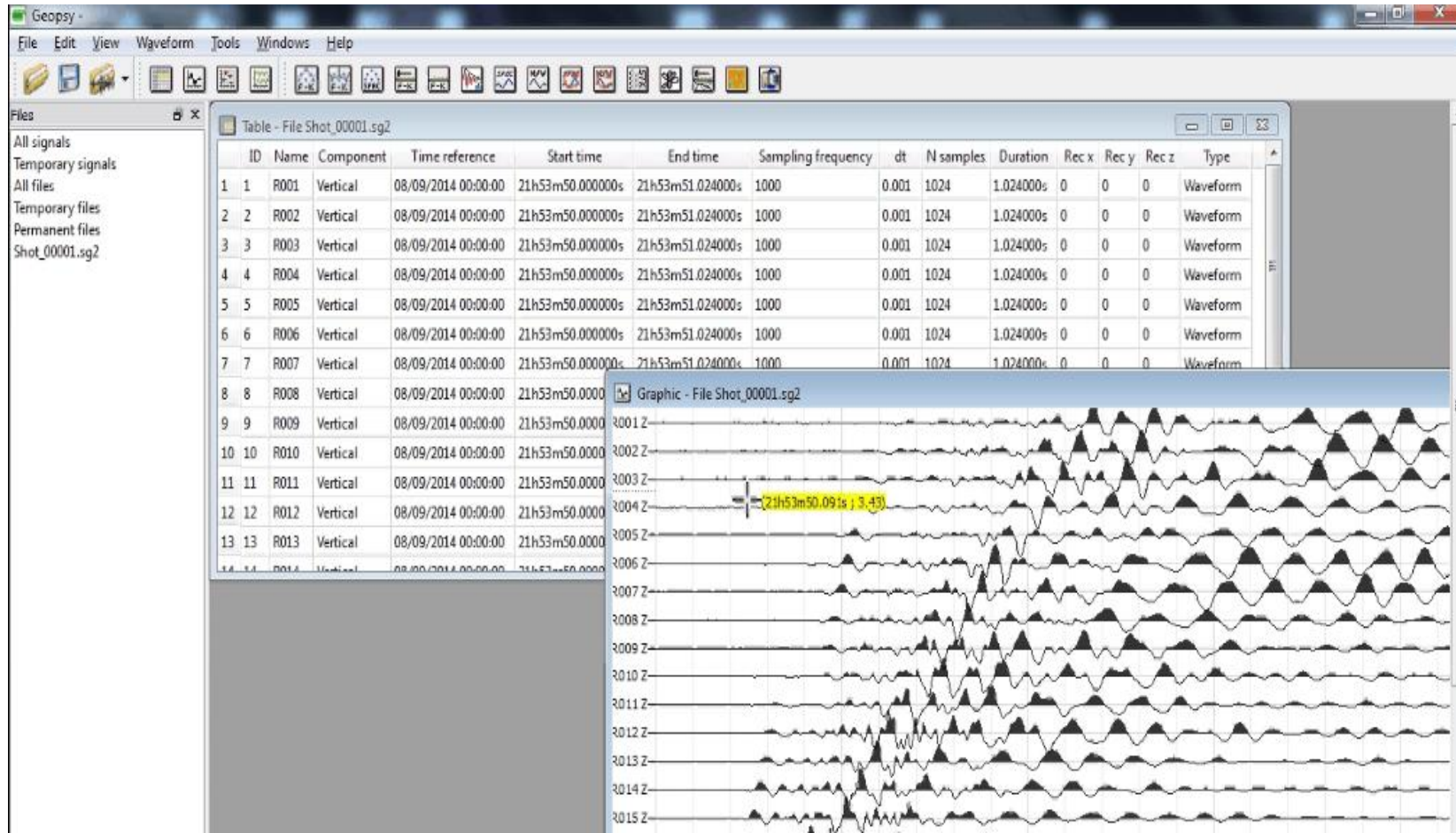


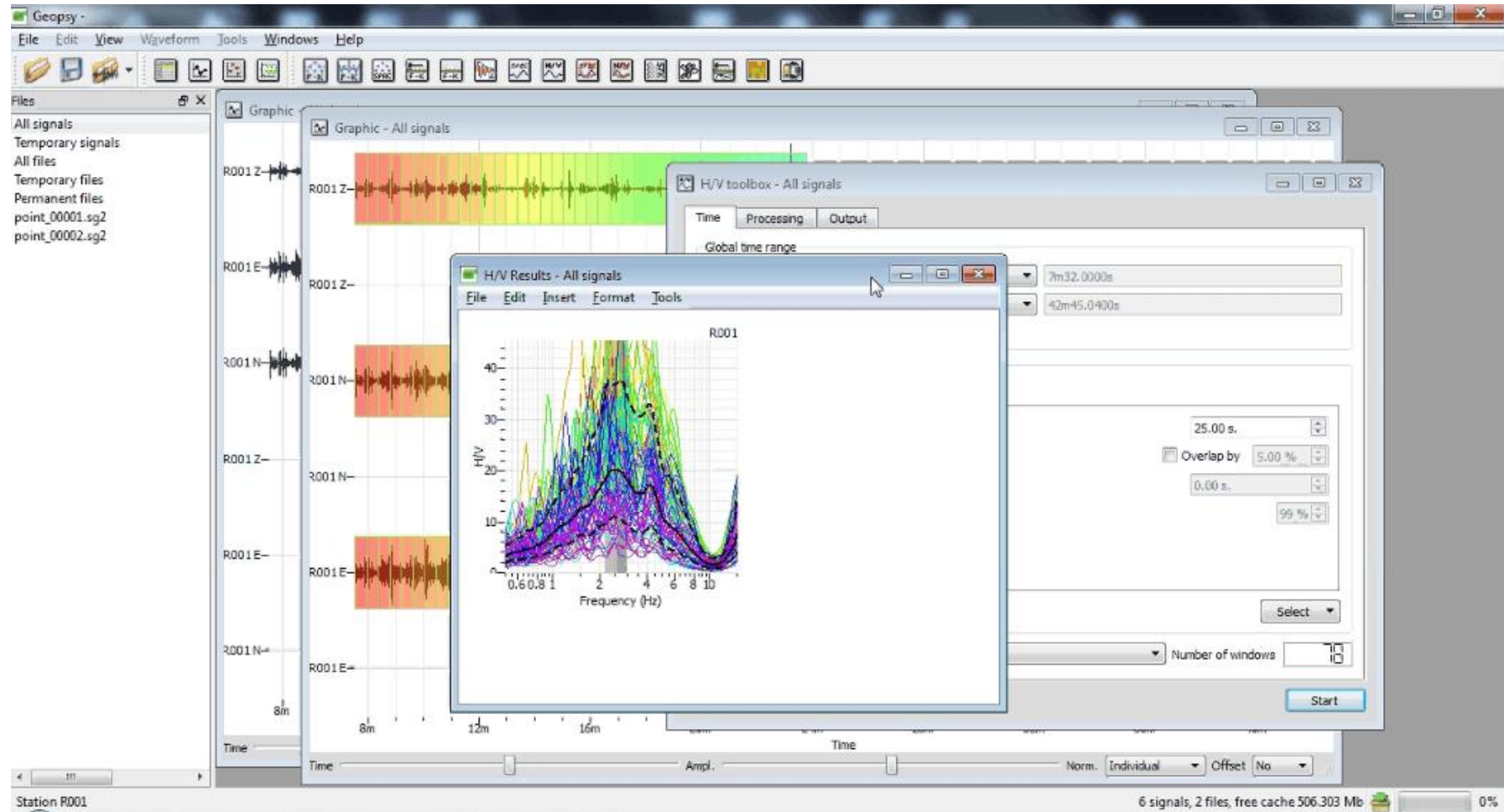
Figure 19 Acquiring data

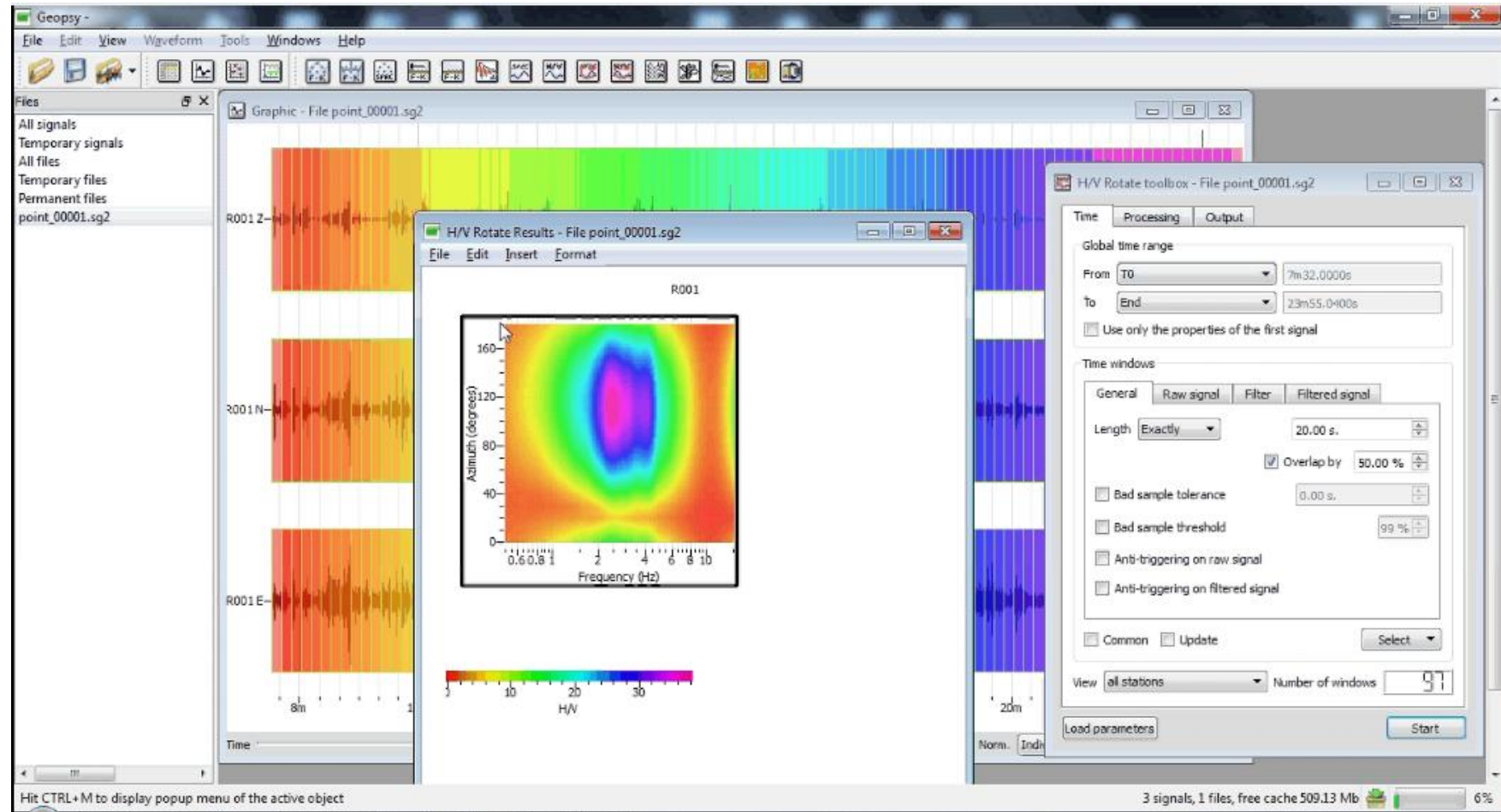


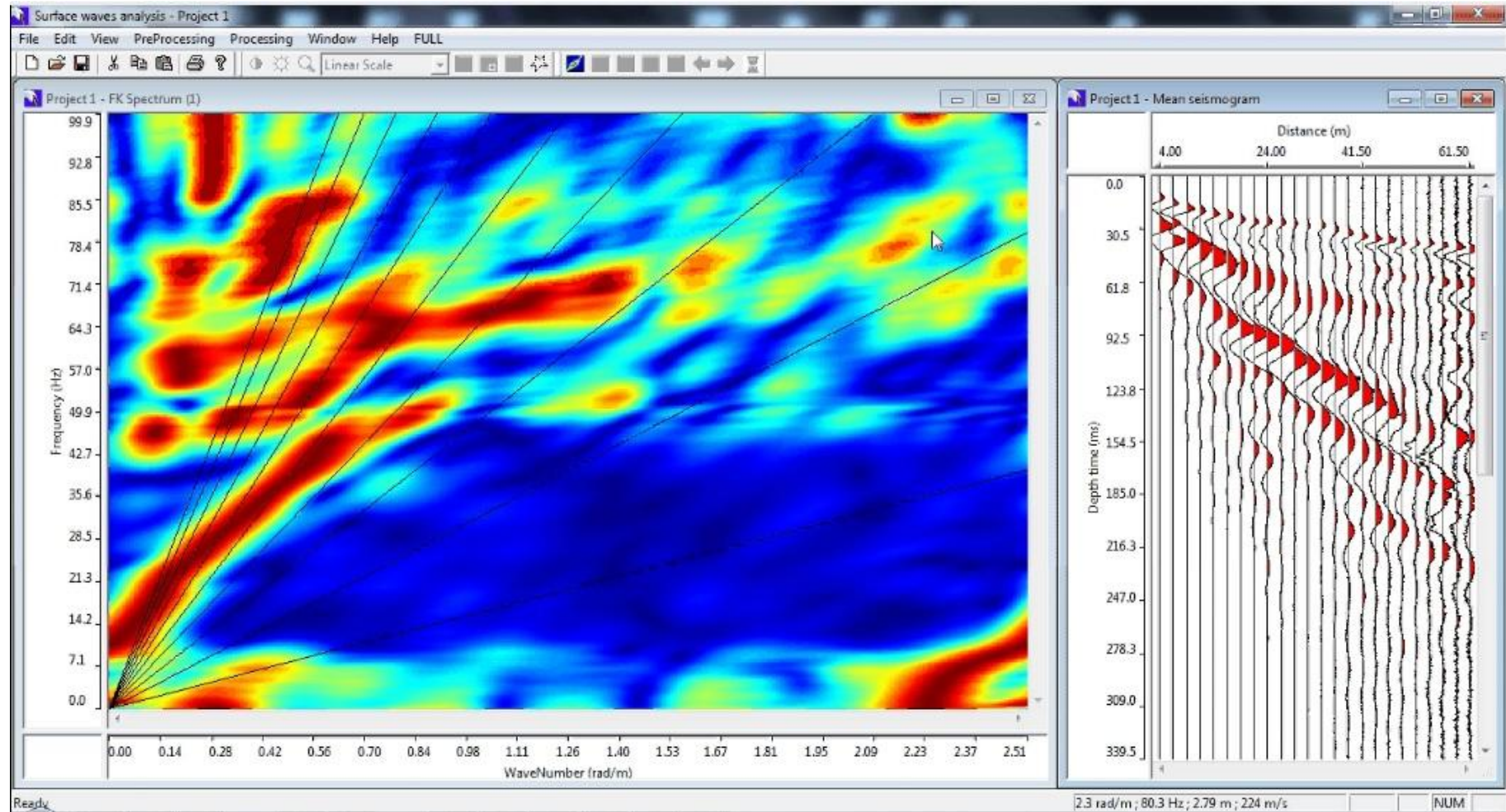
- MASW Seismogram vs REMI Seismogram

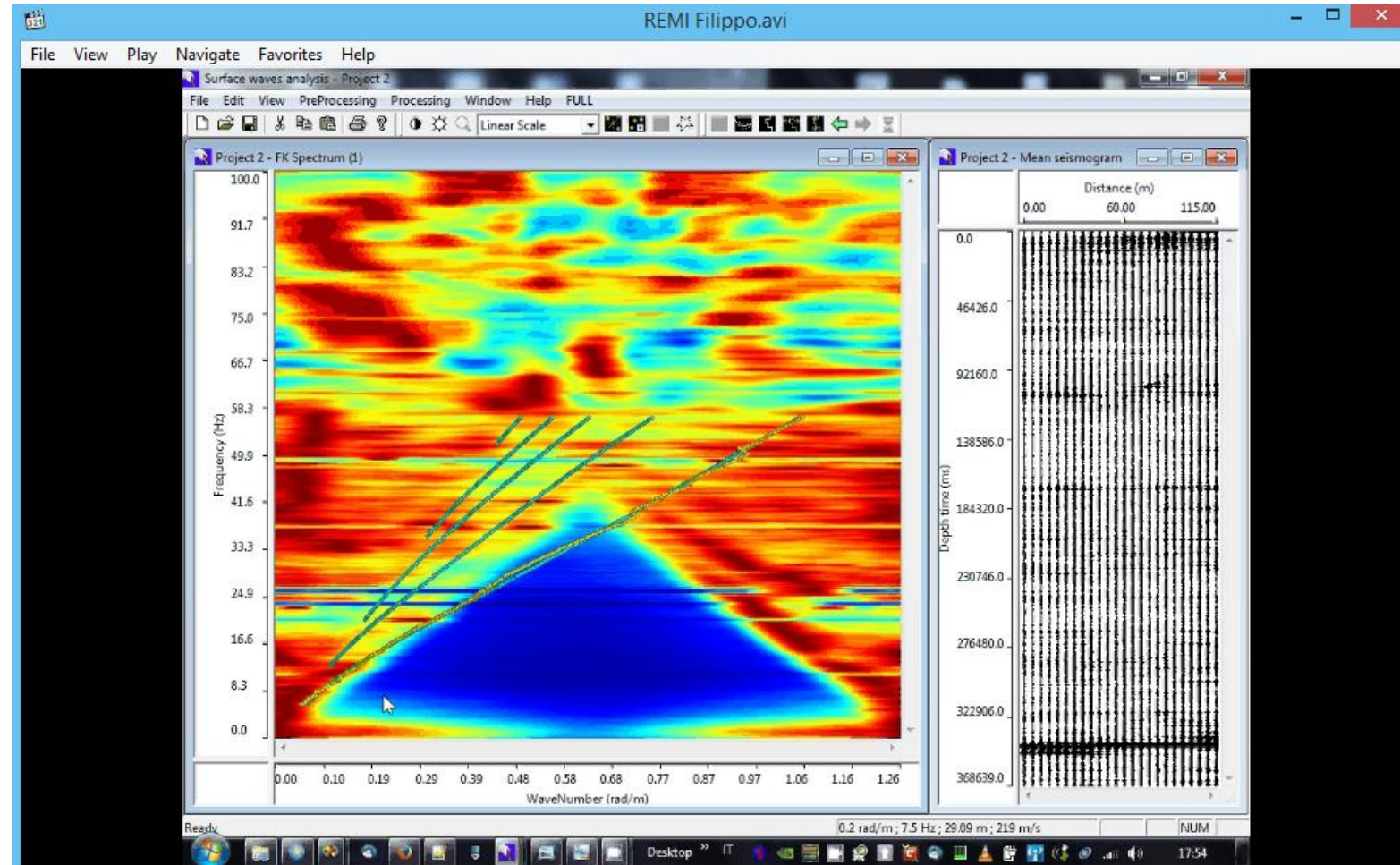


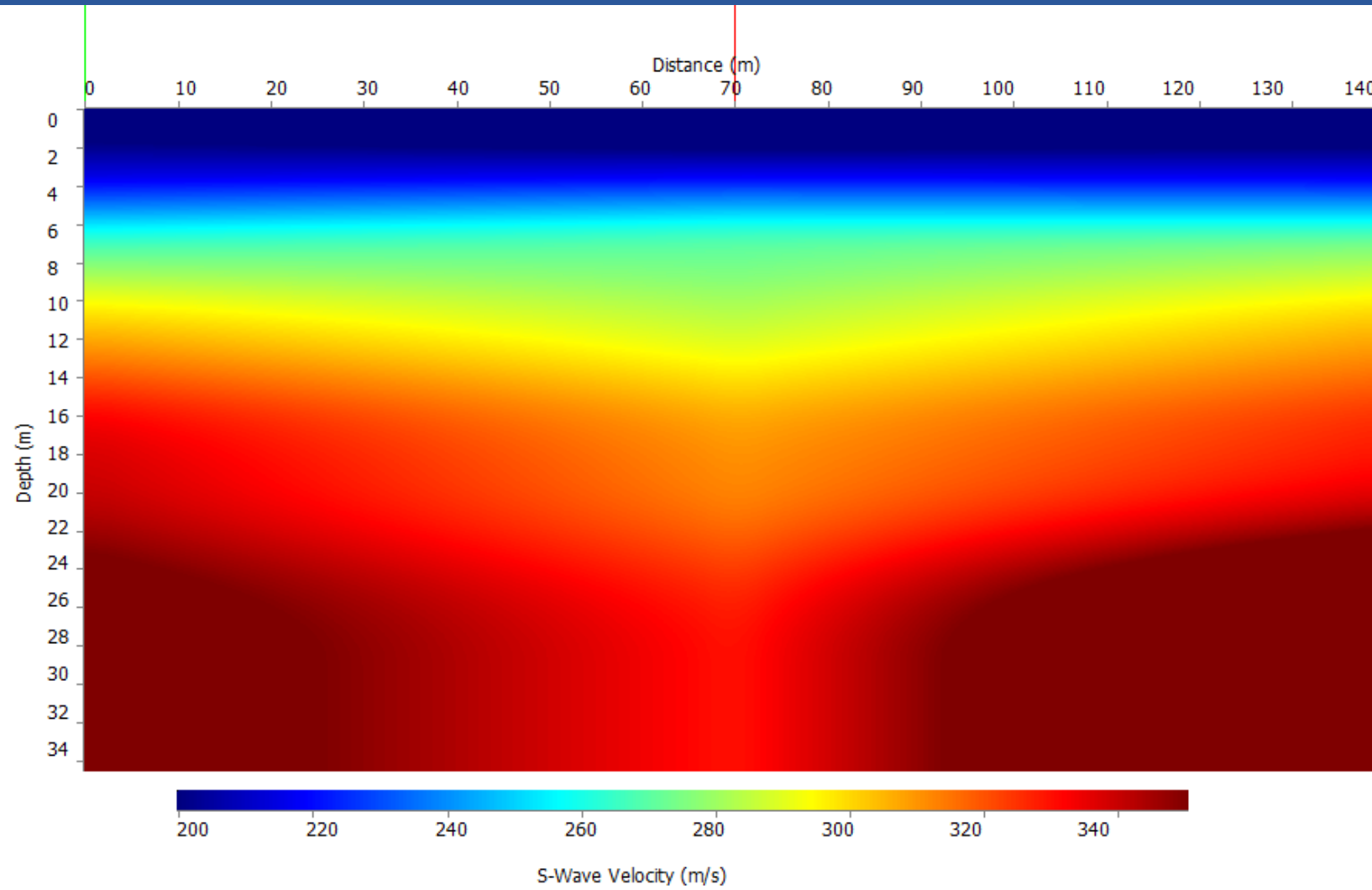


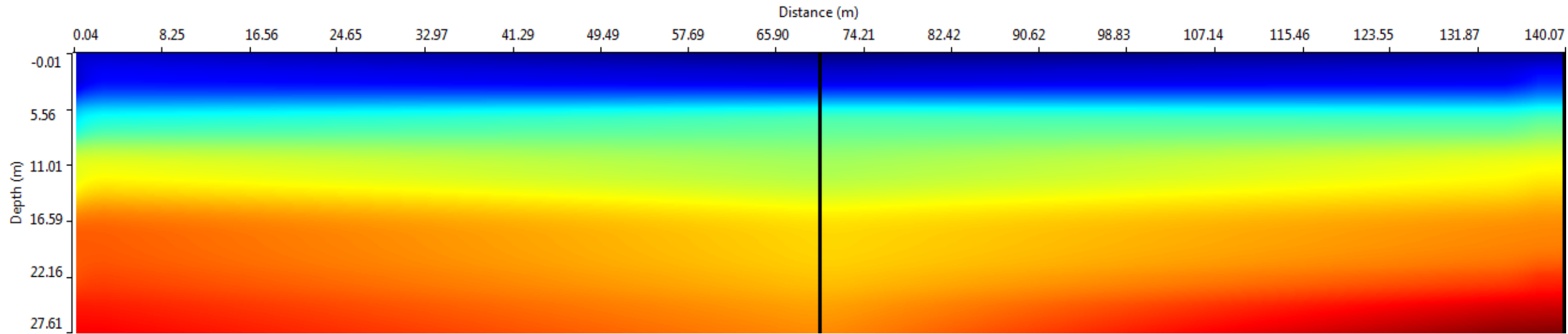


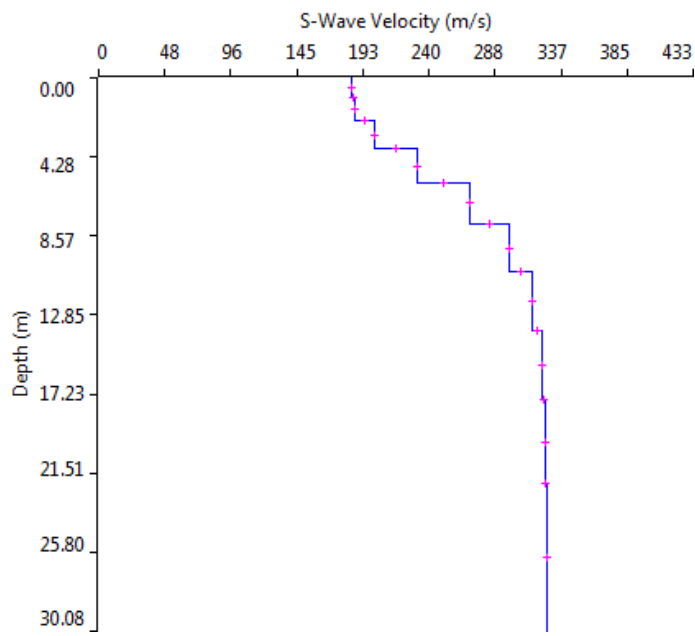
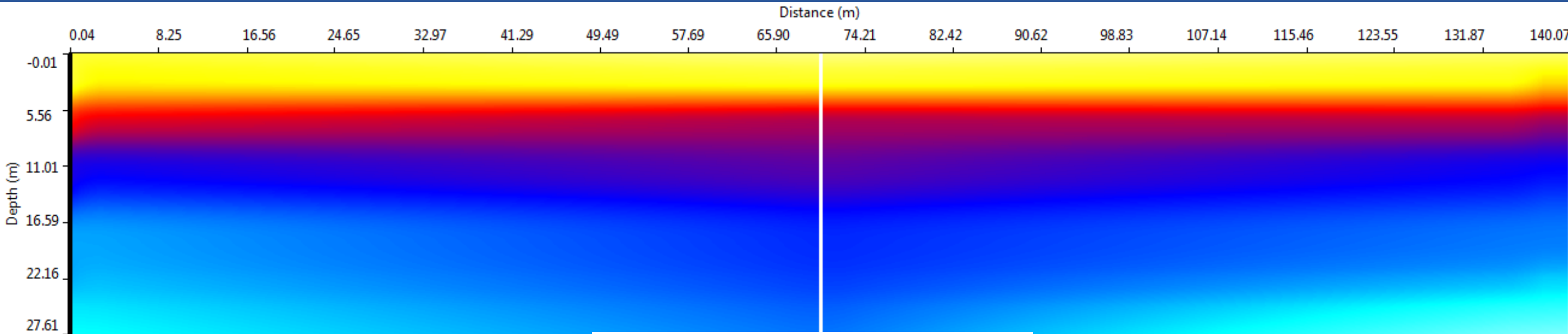


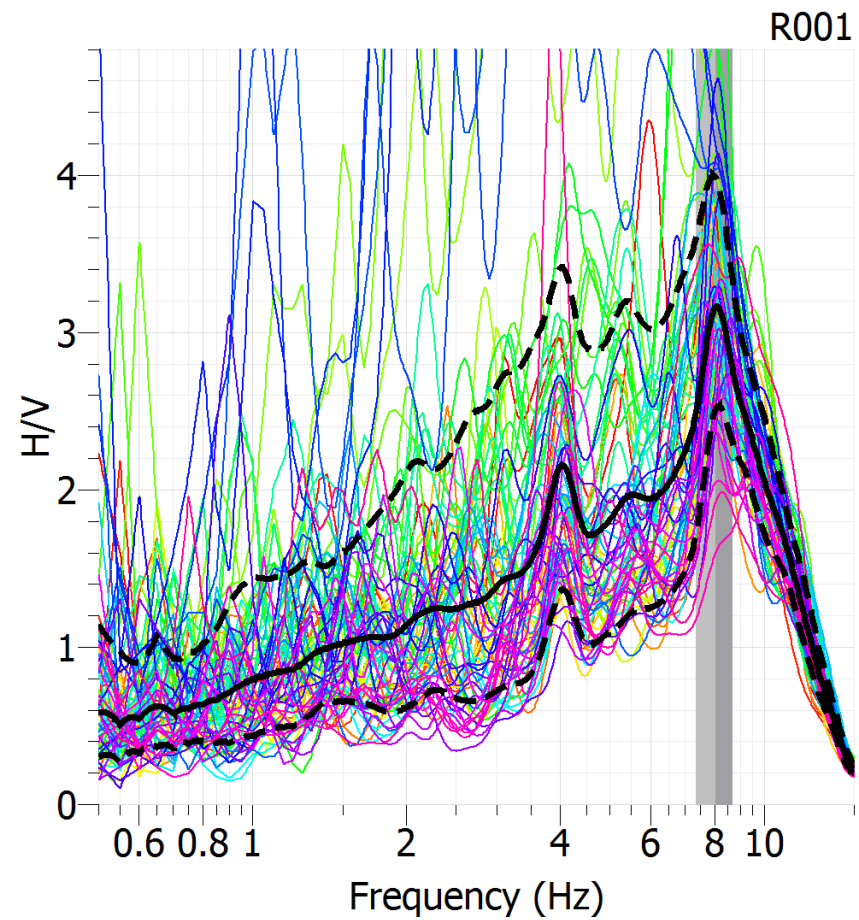
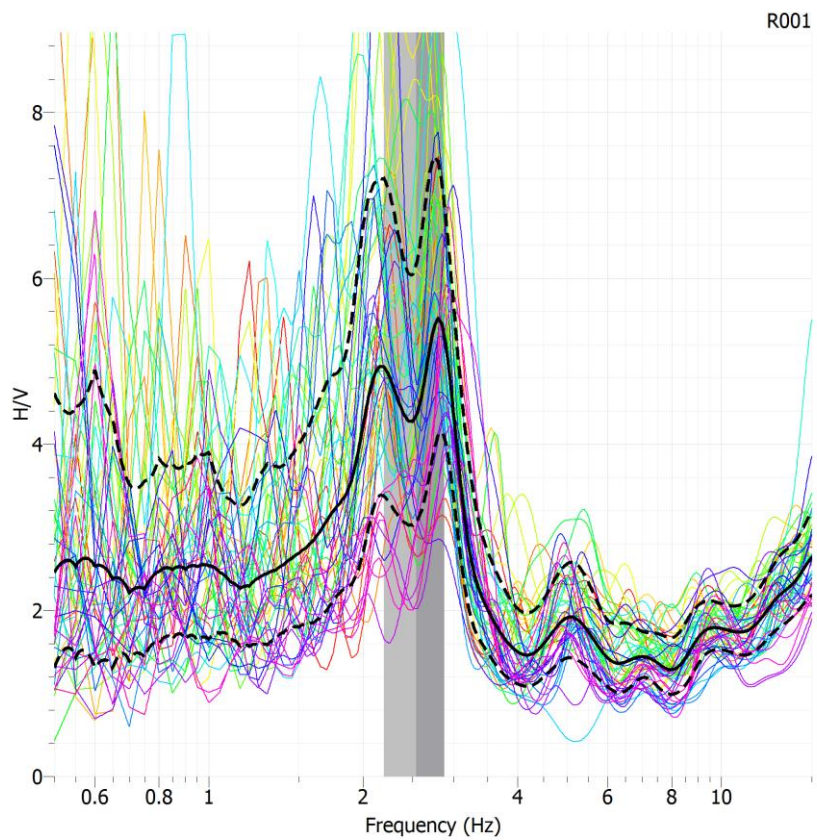


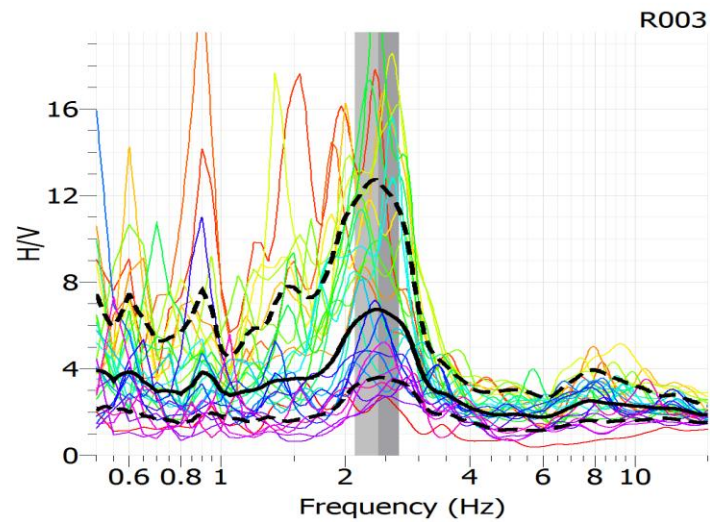
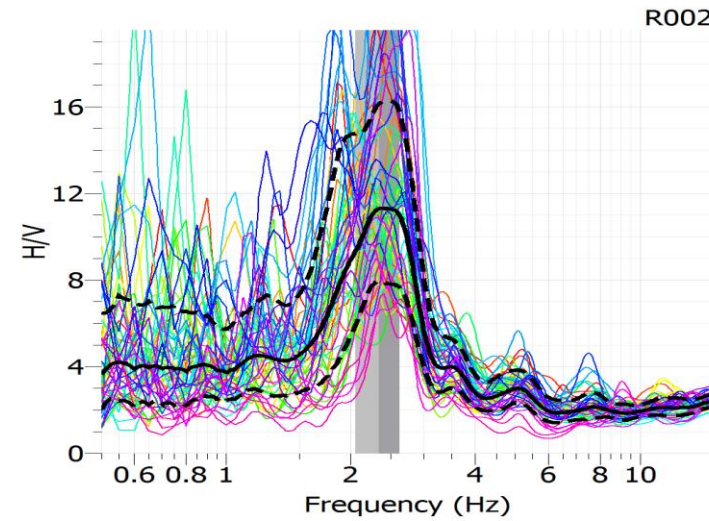
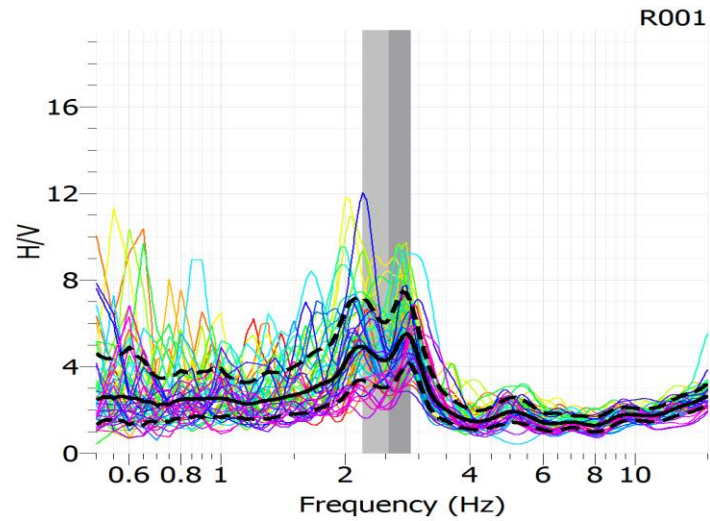




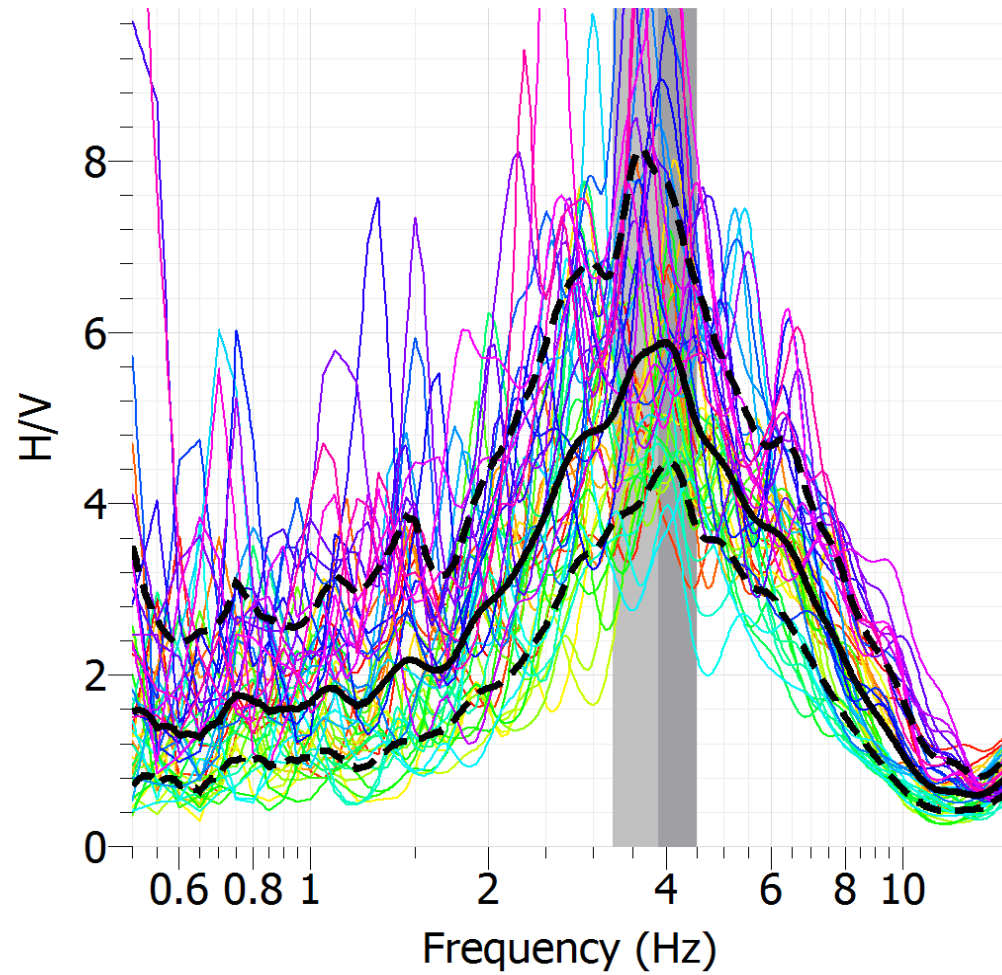




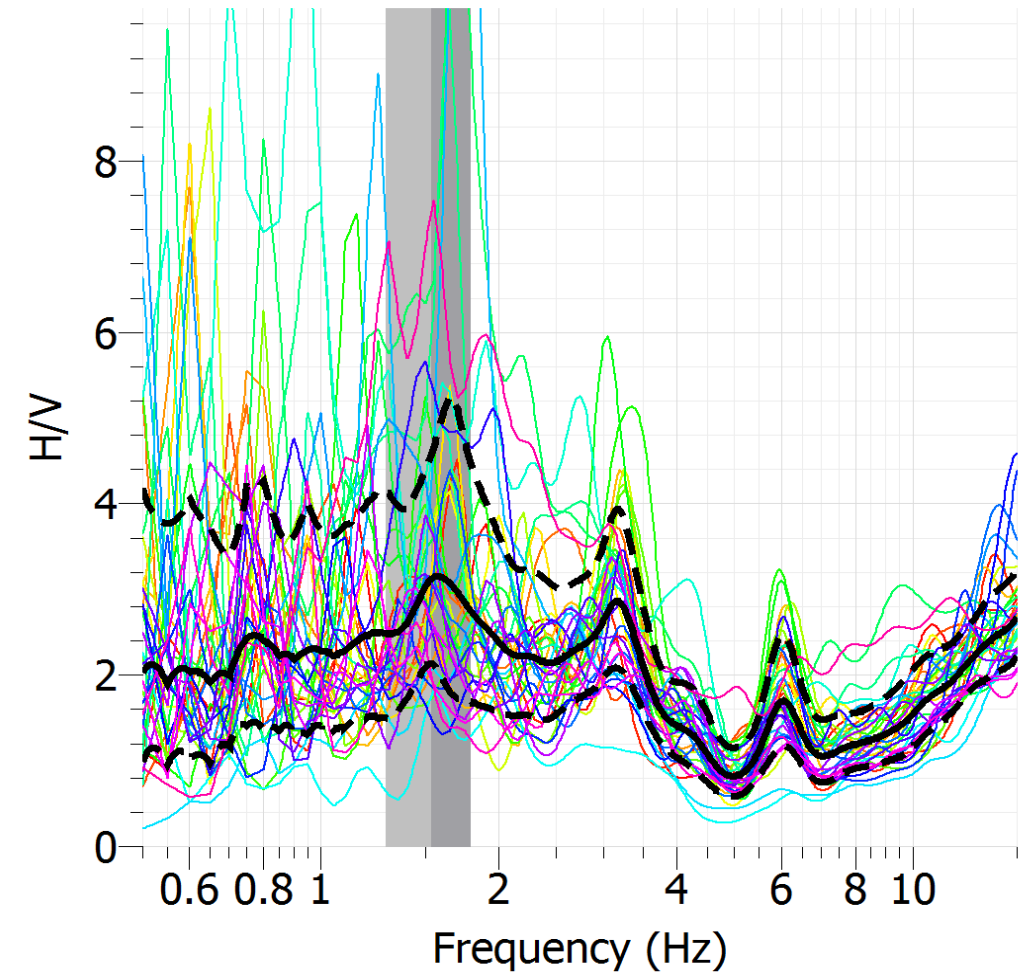


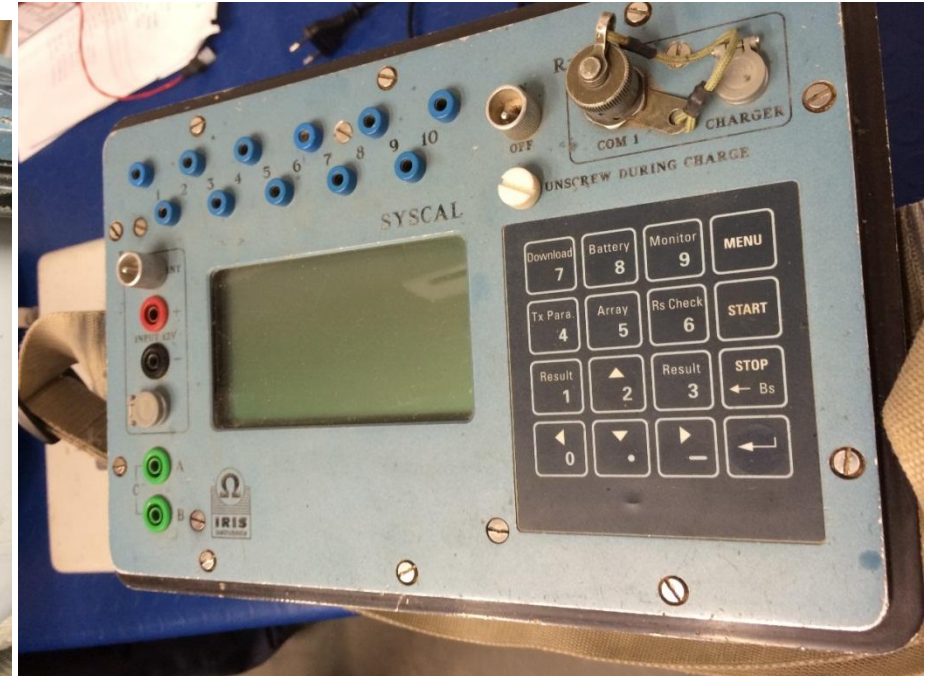


R001



R002





**SOLGEO Company**

 **SolGeo**  
Soluzioni geofisiche

▲ **EQUIPMENTS WAREHOUSE**

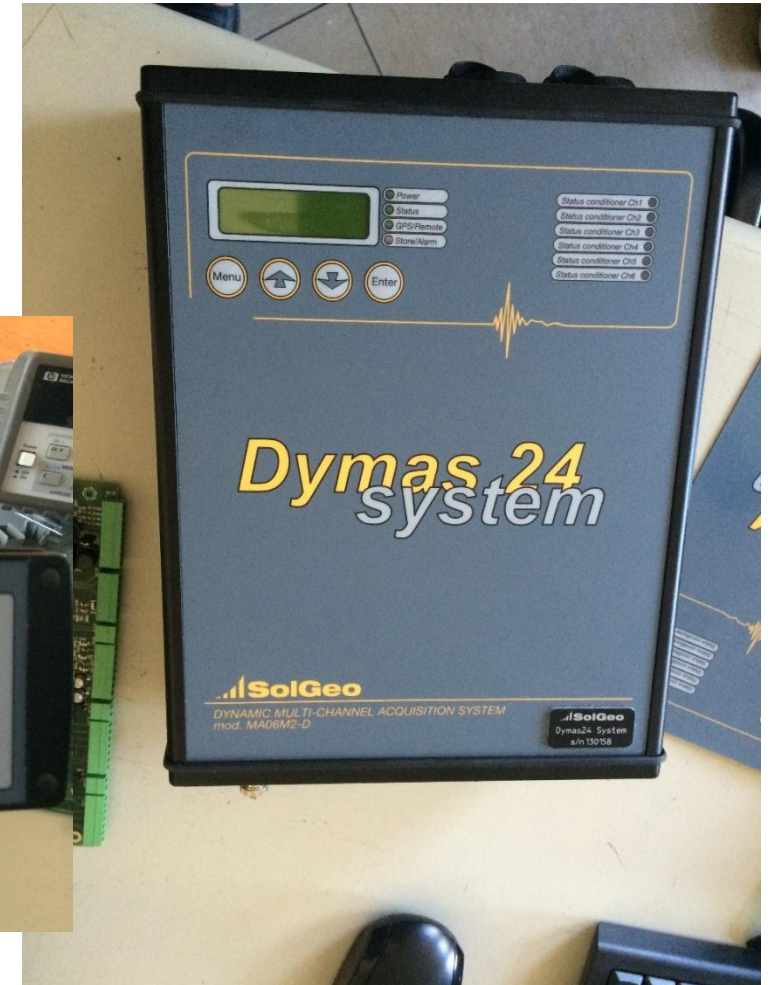


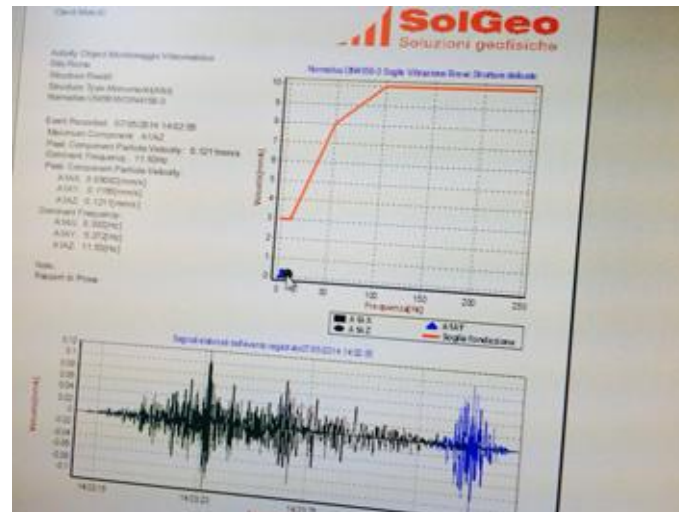
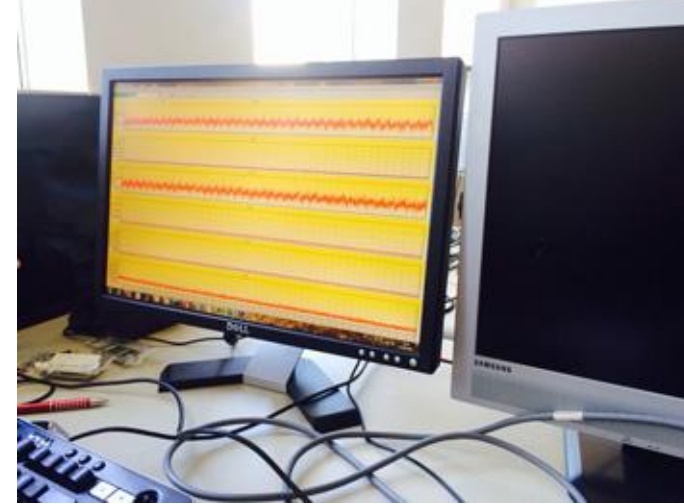
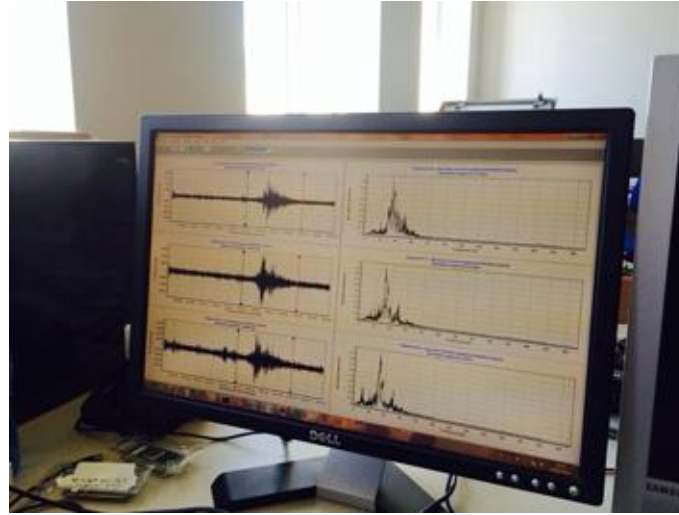
▲ **SEISMIC CABLES & GEOPHONES WAREHOUSE**

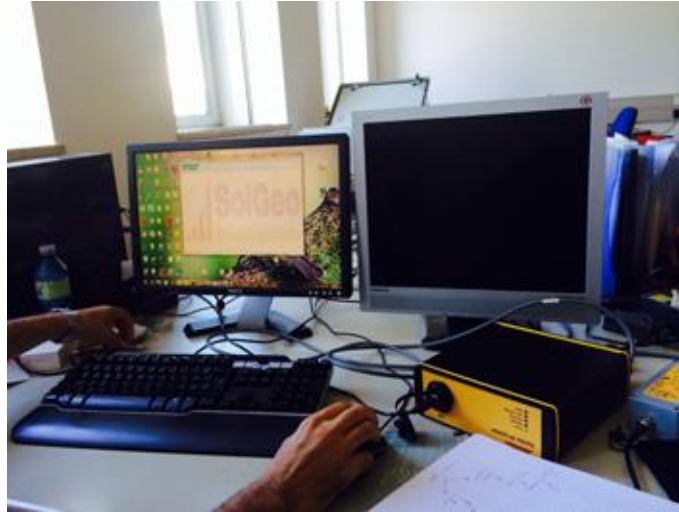


▲ **PROTOTYPES MACHINE SHOP**

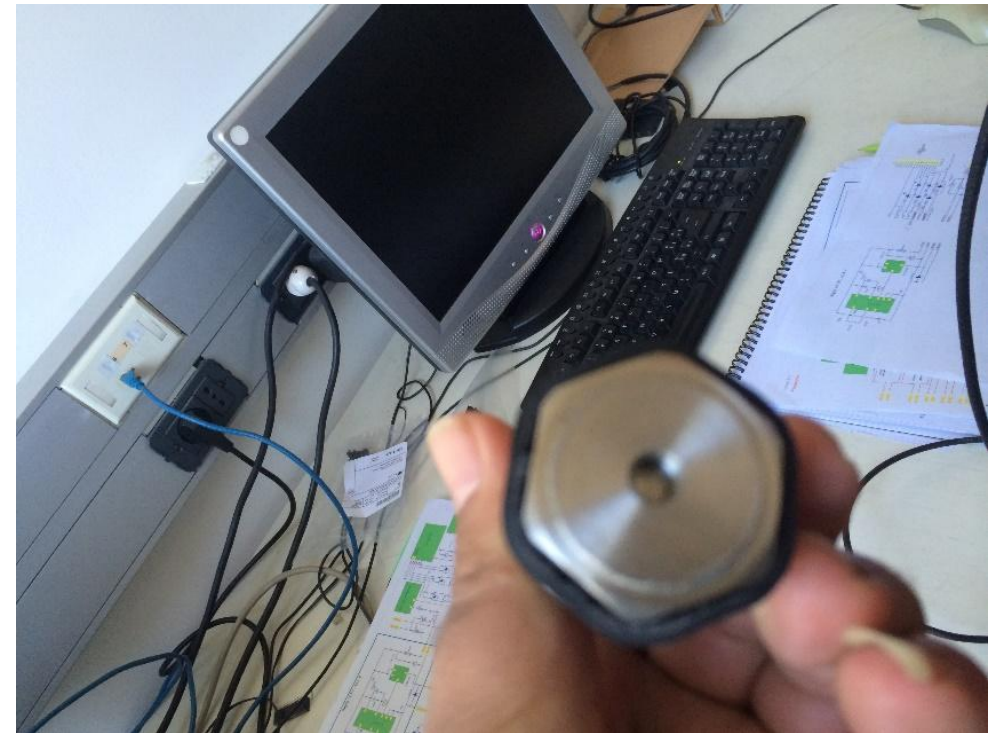


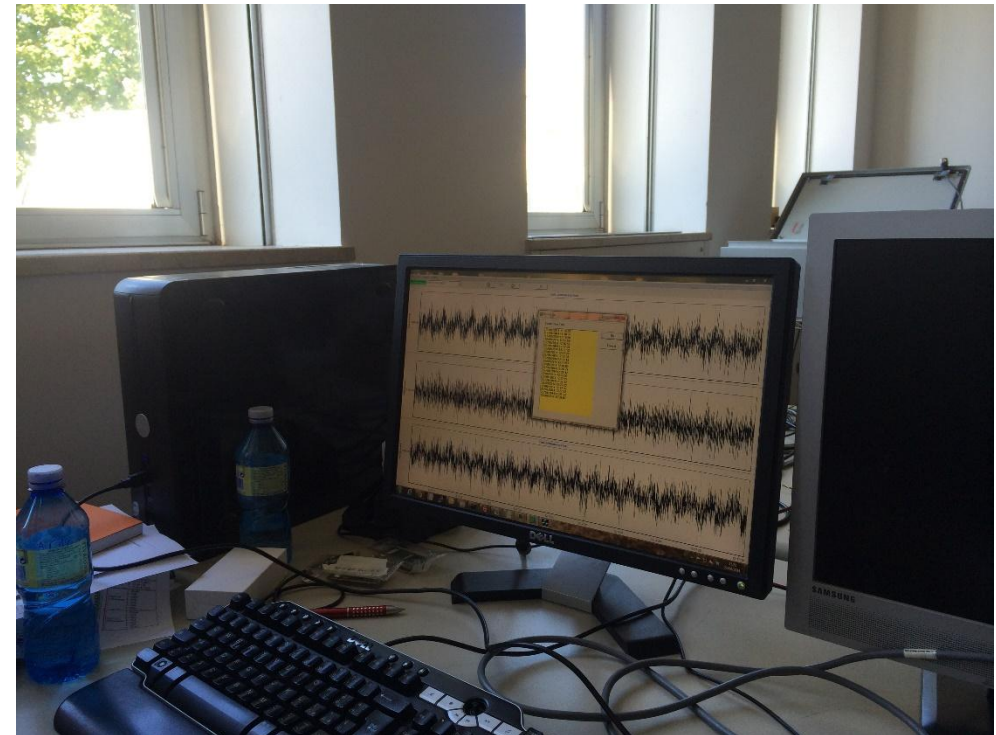
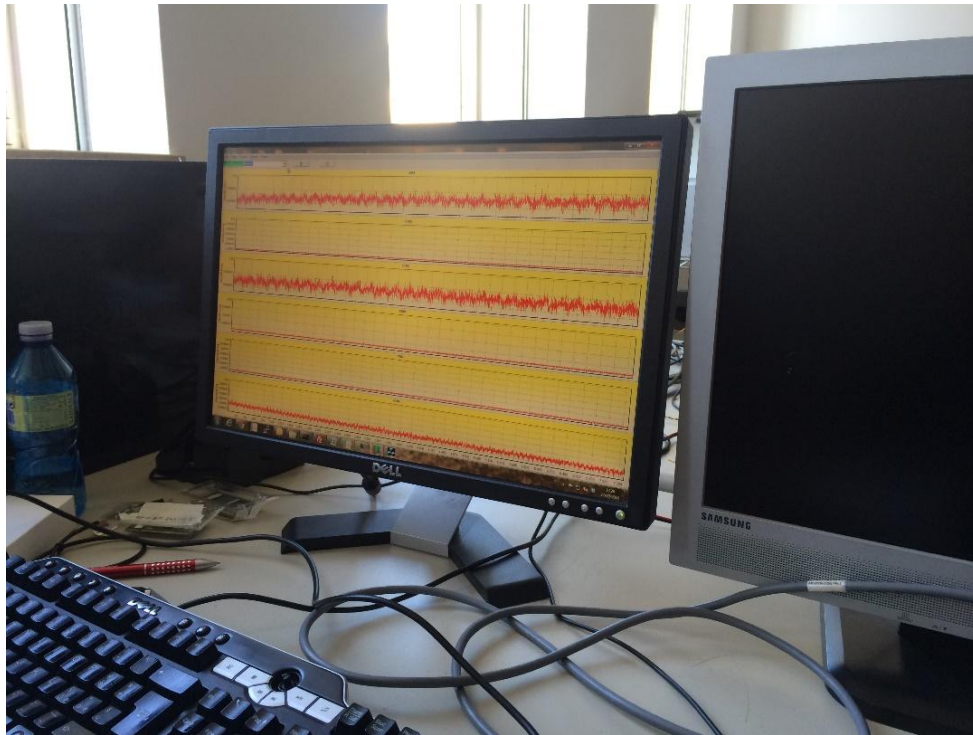


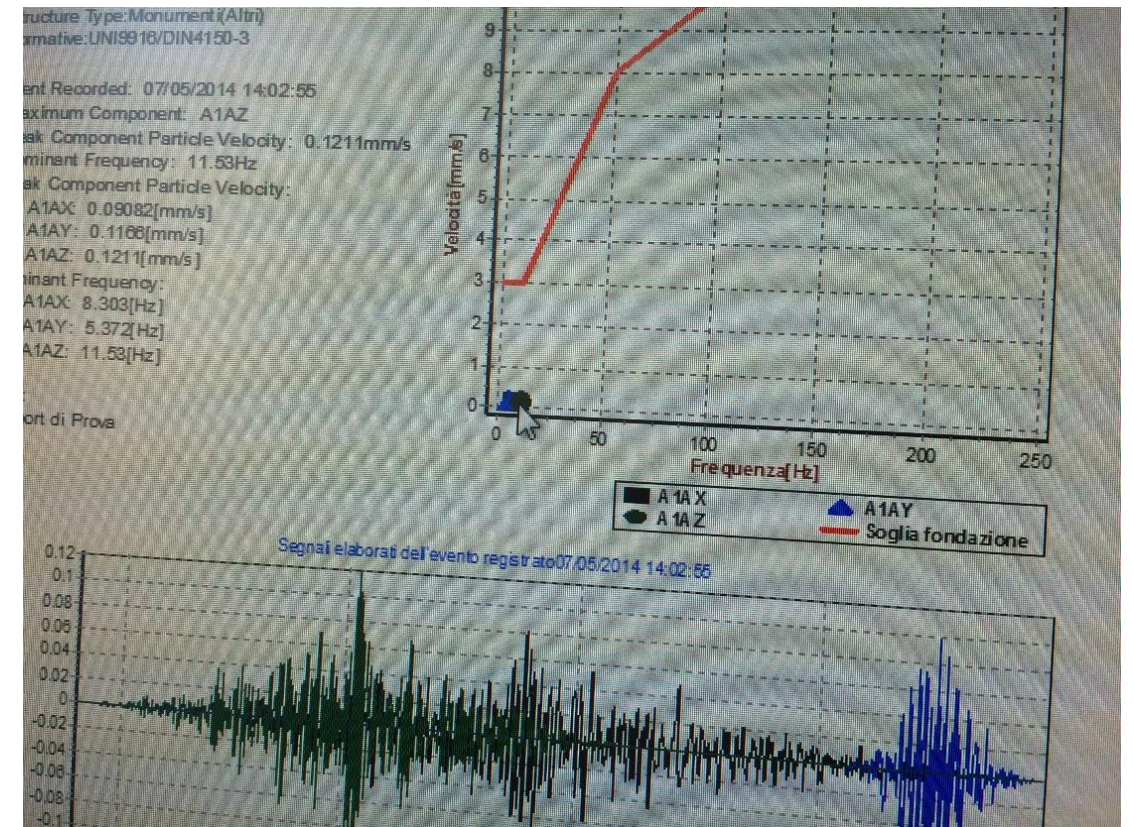
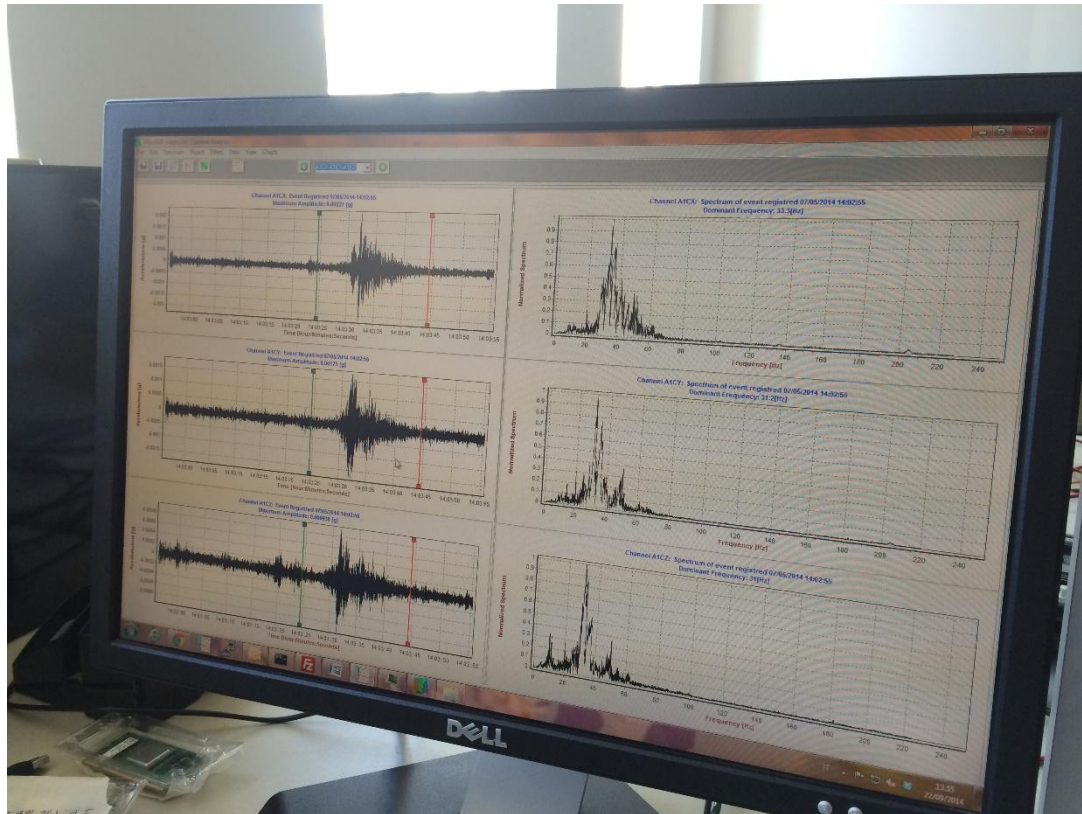










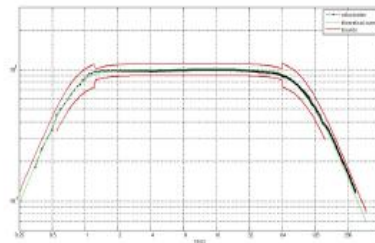
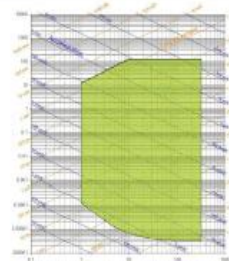






### VELOGET 3D VELOCIMETER

- ▲ CLASS I VELOCIMETER, EXTREMELY COMPACT AND CHARACTERIZED BY A RUGGED IP67 PACKAGE.
- ▲ CONFORM DIN 4150-3, DIN 45669-1, UNI 9916 AND UNI 9614.
- ▲ TRIAXIAL, BIAXIAL AND MONOAXIAL CONFIGURATIONS AVAILABLE.
- ▲ IT COMES WITH A FEMALE CONNECTOR OR WITH A CABLE FOR PERMANENT INSTALLATIONS.
- ▲ IT HAS A HIGH DYNAMIC RANGE AND IT IS PROPERLY DESIGNED TO BE USED WITH SEISMIC RECORDERS OF THE DYMAS OR EDAX FAMILIES.
- ▲ A PARTICULAR SYSTEM ON THE BOTTOM ALLOWS TO FIX IT ON THE FLOOR OR ON THE WALL.

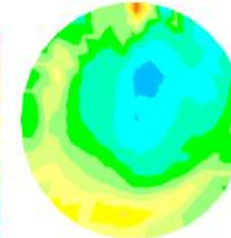
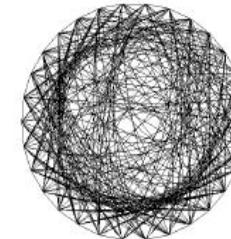


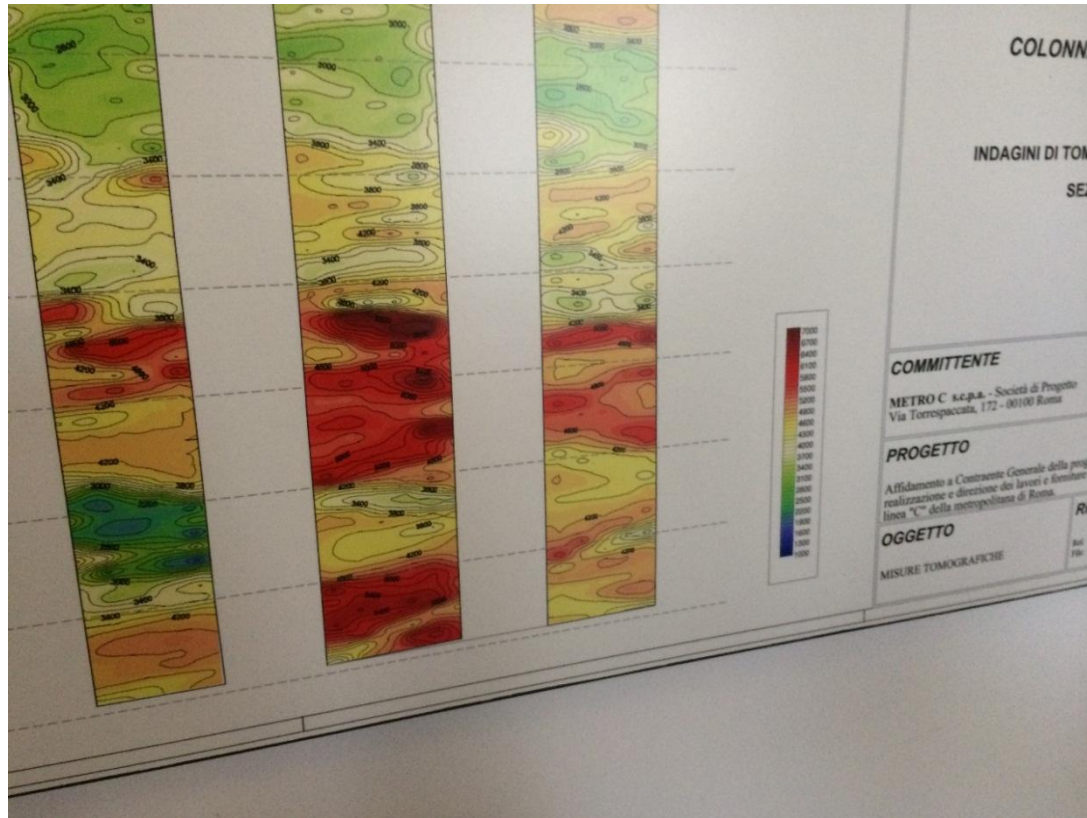
## A3C-660 ACCELEROMETER



- ▲ A3C-660 IS A THREE AXIS ACCELEROMETER
- ▲ THIS DEVICE EMPLOYS PIEZOELECTRIC SENSING ELEMENTS, FOR LOW NOISE MEASUREMENTS
- ▲ WIDE DYNAMIC RANGE
- ▲ EXCELLENT BANDWIDTH
- ▲ LOW DISTORTION
- ▲ HIGH SHOCK TOLERANCE AND THERMAL STABILITY MAKE IT IDEAL FOR APPLICATIONS SUCH AS EARTHQUAKE AND SEISMOLOGY MEASUREMENTS
- ▲ EASILY TO FIX
- ▲ PROVIDED WITH A PLATFORM WITH LEVELLING SCREWS AND SINGLE BOLT.

**CMS SYSTEM** FOR SONIC  
AND ULTRASONIC MEASUREMENT ON  
CONCRETE STRUCTURES

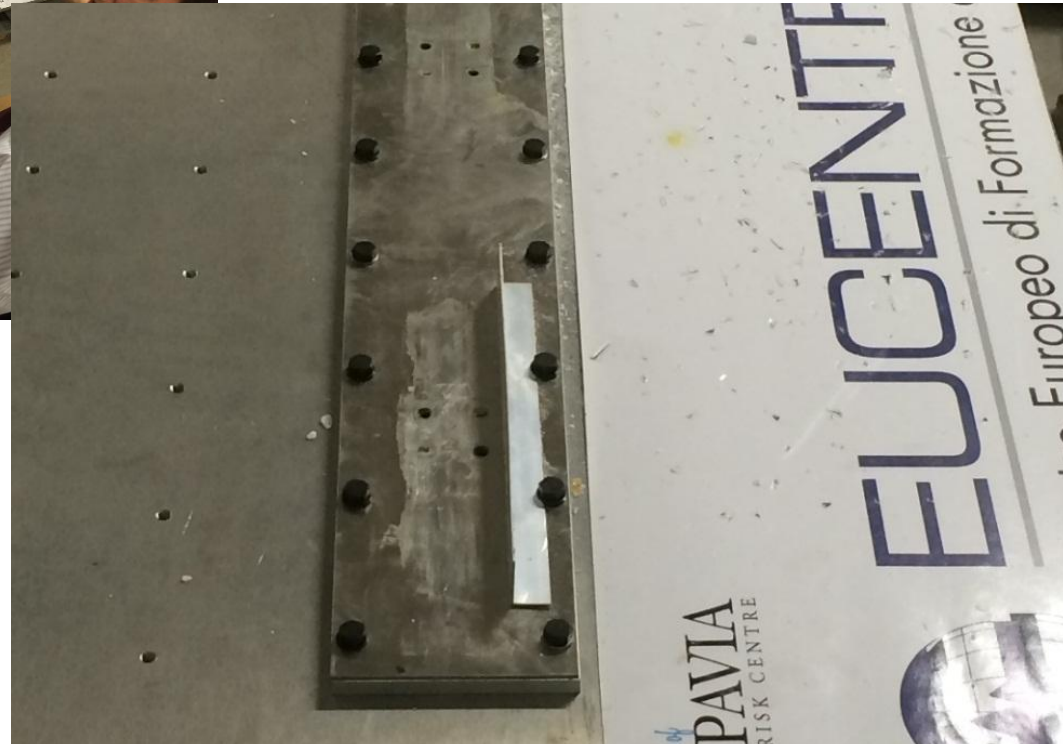




# Shaking Table

















---

# Thank you